

Important Telephone Numbers

American Cancer Society (ACS) 1-800-ACS-2345
National Cancer Institute 1-800-4-CANCER
Cancer Care Counseling Line 1-800-813-HOPE

Your Health Insurance

Provider / Plan

Group ID Number

Telephone Number

Your Health Care Team

Doctor

Tel. No. _____

Name

Tel. No. _____

Name

Tel. No. _____

CYTOGEN

Cytogen Corporation

650 College Road East, Suite 3100

Princeton, New Jersey 08540

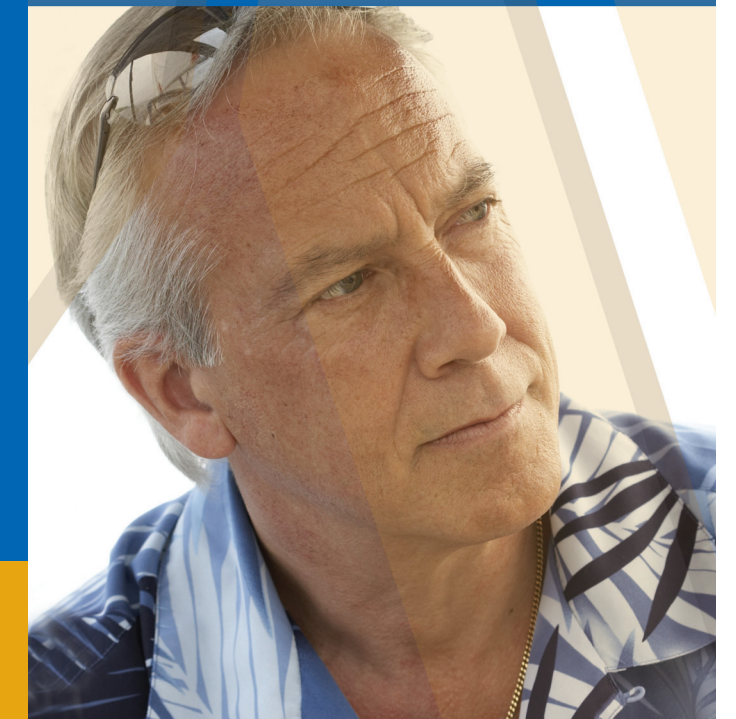
1-800-833-3533

www.cytogen.com

©2006 Cytogen Corporation. All rights reserved. P-0303-06 April 2006

PROSTASCINT
(Capromab Pendetide)

INSTRUCTION GUIDE



This instruction guide will help you understand how ProstaScint® works and what you need to know during and after your ProstaScint injection and imaging sessions.

ProstaScint® Instructions

(Capromab Pendetide)

ProstaScint is an imaging agent that can help locate and identify previously diagnosed prostate cancer.

How ProstaScint Works

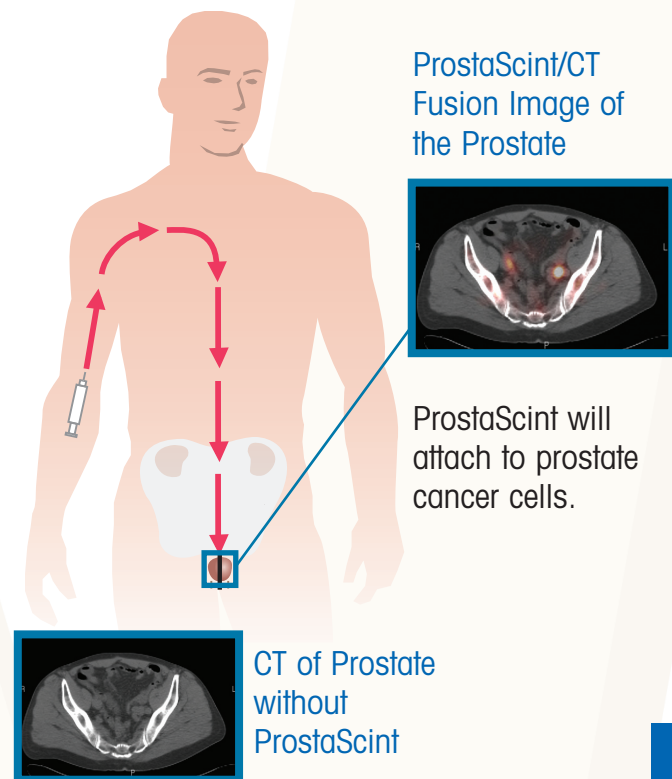
ProstaScint is a monoclonal antibody combined with a small amount of radioactive material called *indium-111* (*In 111*). As ProstaScint circulates through your body, it attaches to Prostate Specific Membrane Antigen (PSMA) which is located on prostate cancer cells. These areas of attachment are visible to a special device called a gamma camera that can detect radiation given off by the indium-111. Using this technology, pictures or images will be produced showing prostate cancer.

Before ProstaScint Tell Your Doctor:

- If you have had a recent nuclear scan.
- If you are allergic or sensitive to any substances or drugs.
- If you are currently taking any prescription or over-the-counter medication.
- If you have ever been given any other medication containing proteins of murine (mouse) origin.

First Visit

ProstaScint will be injected by a nuclear medicine professional over a short period of time (generally 5 minutes). You will be monitored during and after the injection. Because scanning procedures may differ from



site to site, one of the following scenarios will take place on your first visit:

Scenario 1

- You will receive a ProstaScint injection and 30 minutes later you will be positioned under a gamma camera and scanned for approximately one hour.
- After the scanning session, you will be asked to return 4 to 5 days later for additional imaging sessions. This allows ProstaScint time to travel throughout your body and target areas of metastatic prostate cancer.

Scenario 2

- You will only receive a ProstaScint injection and be asked to return 4 to 5 days later for the imaging sessions. This

allows ProstaScint time to travel throughout your body and target any areas of metastatic prostate cancer.

Second Visit

- The night before the second visit you will be asked to take an oral laxative.
- The morning of the second visit, prior to your appointment, a cleansing enema will be required.
- When arriving in the department, and before your scan begins, you will be asked to empty your bladder.

It is important that the nuclear medicine physician sees a clear picture.

The presence of urine or stool can make it difficult to examine suspicious areas.

In some instances you may receive another injection of an agent that will allow imaging of your blood pool.

You will be positioned under the gamma camera and a number of pictures will be taken. The second scan takes approximately two hours.

Since scanning procedures may differ or change, please contact your nuclear medicine professional for their specific procedure.

After ProstaScint

- A nuclear medicine physician will interpret the ProstaScint scans and the results will be sent to your physician.
- Resume your normal daily activities.
- A ProstaScint infusion will have no effect on your sexual function.

Safety Information

- In clinical trials, adverse reactions were reported in about 4% of 529 patients. The most common adverse reactions are increased levels of bilirubin in the blood, elevated blood pressure or low blood pressure. These reactions were reported to occur in less than 1% of patients.
- ProstaScint is a monoclonal antibody of murine (mouse) origin. Since this is a foreign protein to humans, following about 10% of administrations, it causes production of Human Anti-Mouse Antibodies (HAMA). The presence of HAMA may increase the risk of adverse reactions and interfere with some blood tests, including those used to assay PSA and digoxin. It could also compromise other diagnostic tests or limit the benefits of other treatments containing murine antibody-based agents. Patients should be advised to discuss prior use of murine-protein based products with their physician.
- Indium In 111 ProstaScint® should not be used in patients who are hypersensitive to this or any other product of murine origin or to Indium In 111 chloride.

Confirmatory studies should be used in conjunction with ProstaScint scan results to determine appropriate patient management.

Medical Insurance

ProstaScint scans are established procedures that are covered by most insurance companies. It is advisable to contact your insurance carrier for information about its specific policies for reimbursement.

ProstaScint full prescribing information enclosed.